



# SERIE SS-WX

*Coreless Bandage Winder*



Automatically unwinding the materials rolls, feeding, winding, length counting, cutting and output the bandage.

Suitable to produce coreless bandage rolls which material with elastic or without elastic, woven or non-woven.

Copyright by LOYAL. This brochure contains photos and technical data for information only, without contractual engagement. LOYAL reserves the right to introduce any modifications in the design and/or equipment.



**WUHAN LOYAL MACHINERY CO., LTD**

©3-502, Chutian 181 Cultural Creative Industry Park, Donghu Road No. 181,  
Wuchang District, 430000, Wuhan City, Hubei Province, China

Mobile: 0086 1387 1887 978 Tel / Fax: 0086 27 8566 3380

E-mail: [loyal@med-machinery.cn](mailto:loyal@med-machinery.cn) [michelle\\_6237@hotmail.com](mailto:michelle_6237@hotmail.com)

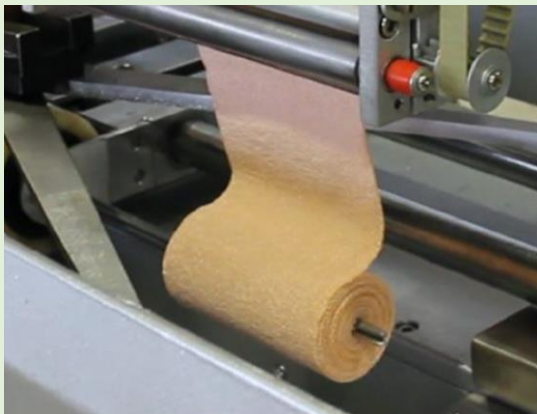
[www.med-machinery.cn](http://www.med-machinery.cn)



# SERIE SS-WX

*Coreless Bandage Winder*

## TECHNICAL SPECIFICATIONS



Cutting at pre-set length with a pair of specially-designed scissors, it makes cutting accurate and clean. After cutting, the materials will automatically feed in.

PLC control and step motor driving ensure the accurate transmission of bandages.



Active unwinding system and pre-feeding system ensure the bandage winding tension stable, bandage will not be elongation during winding process spin speed variation.

Copyright by LOYAL. This brochure contains photos and technical data for information only, without contractual engagement. LOYAL reserves the right to introduce any modifications in the design and/or equipment.



**WUHAN LOYAL MACHINERY CO., LTD**

©3-502, Chutian 181 Cultural Creative Industry Park, Donghu Road No. 181,  
Wuchang District, 430000, Wuhan City, Hubei Province, China

Mobile: 0086 1387 1887 978 Tel / Fax: 0086 27 8566 3380

E-mail: [loyal@med-machinery.cn](mailto:loyal@med-machinery.cn) [michelle\\_6237@hotmail.com](mailto:michelle_6237@hotmail.com)

[www.med-machinery.cn](http://www.med-machinery.cn)



# SERIE SS-WX

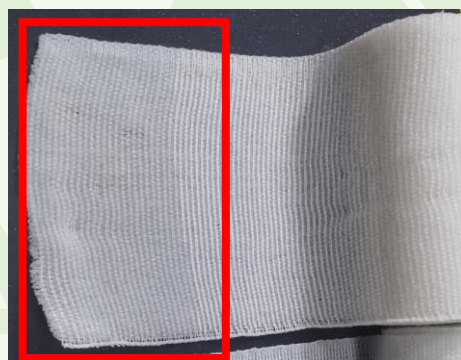
*Coreless Bandage Winder*



Cutting accurate as pre-set length equally and stable.

Glue coating function can be customize on machine.

Glue coating will seal the edge of the bandage, makes the bandage have better quality.



## Technical Parameter

Production speed	7-9 circle/min
Working width	4 lanes for 5-10cm width bandage, 2 lanes for 11-20cm width bandage.
Overall dimension	1930x1520x800mm(winder) 1000x800x1800mm(pre feeding system)

Copyright by LOYAL. This brochure contains photos and technical data for information only, without contractual engagement. LOYAL reserves the right to introduce any modifications in the design and/or equipment.



**WUHAN LOYAL MACHINERY CO., LTD**

©3-502, Chutian 181 Cultural Creative Industry Park, Donghu Road No. 181,  
Wuchang District, 430000, Wuhan City, Hubei Province, China

Mobile: 0086 1387 1887 978 Tel / Fax: 0086 27 8566 3380

E-mail: loyal@med-machinery.cn michelle\_6237@hotmail.com

www.med-machinery.cn